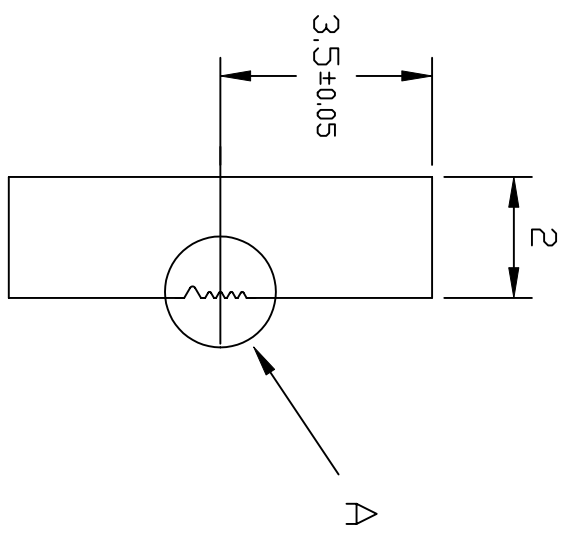
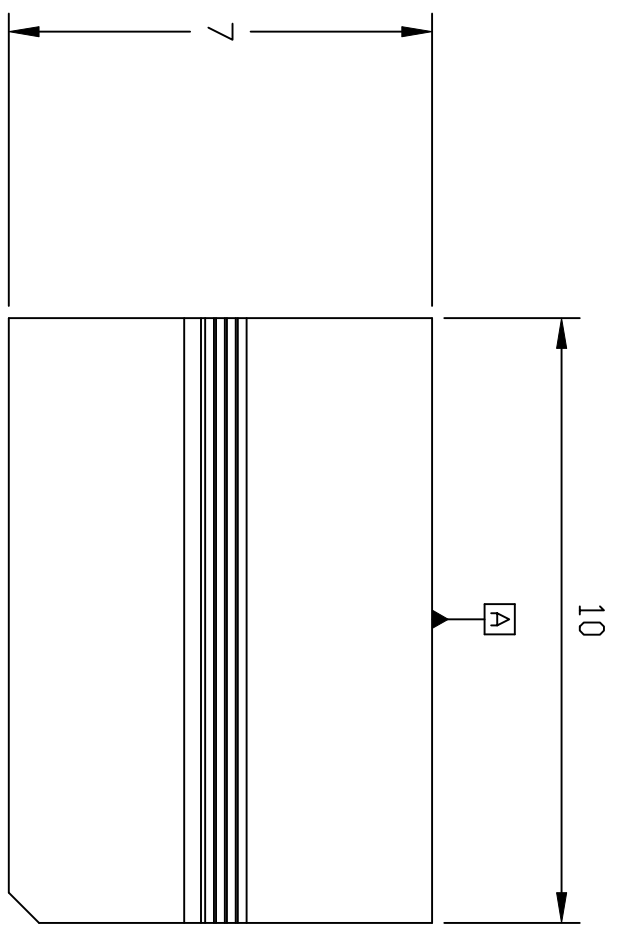


Detail A



Fiber centers should be just above the surface level
Angular tolerance of V-grooves relative to edge A: 0.05 degrees

| | | | | | | | | |
|----------|---------------|-----------|-------|-----|------|------------|------|----------|
| Material | Fused Silica | Gen. Tol. | Scale | 8:1 | Date | 2005-12-10 | File | MicroV_1 |
| FIES | Micro V-block | | | | | | | |